

IBI24-HD, IBI30-HD, IBI36-HD, IBI42-HD, IBI48-HD

Infinite Series Built-In Horizontal Door

Create a uniform look throughout your outdoor kitchen using our access doors—it will be the perfect addition to any outdoor Crown Verity kitchen.

**Built-In Component**

Engineered to easily integrate within your cabinetry.



IBI30-HD model shown

FEATURES

- Constructed of 304 stainless steel
- Product width matches corresponding grill width

Available sizes, specifications, and line drawings listed on the following page

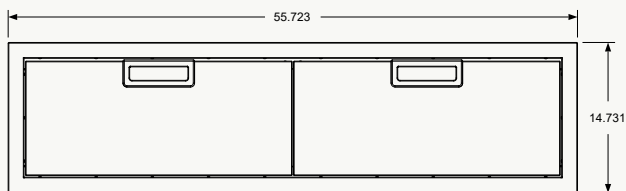
SPECIFICATIONS



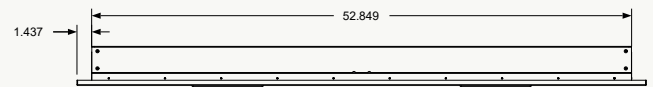
MODEL	IBI24-HD	IBI30-HD	IBI36-HD	IBI42-HD	IBI48-HD
OVERALL MEASUREMENTS	29.244" W ×	35.244" W ×	41.244" W ×	47.244" W ×	55.723" W ×
	14.731" H ×	14.731" H ×	14.731" H ×	14.731" H ×	14.731" H ×
	3.813" D	3.813" D	3.813" D	3.813" D	3.813" D
CUTOUT MEASUREMENTS	26.625" W ×	32.625" W ×	38.625" W ×	44.625" W ×	53.125" W ×
	12.125" H ×	12.125" H ×	12.125" H ×	12.125" H ×	12.125" H ×
	3.813" D	3.813" D	3.813" D	3.813" D	3.813" D

LINE DRAWINGS

FRONT - IBI48-HD



TOP - IBI48-HD



For additional resources like CAD drawing, line drawings, and manuals, please visit crownverity.com